



# INSTRUCTION BULLETIN

No. 340762  
Machine: ATLV 4300  
Published: 06-2005  
Rev. 00

**NOTE: DO NOT DISCARD the Parts List from the Instruction Bulletin. Place the Parts List in the appropriate place in the machine manual for future reference. Retaining the Parts List will make it easier to reorder individual parts and will save the cost of ordering an entire kit.**

*NOTE: Numbers in parenthesis ( ) are reference numbers for parts listed in Bill of Materials.*

Installation instructions for **kit number 9001168**

## SYNOPSIS:

This kit contains the parts needed to replace the vacuum wand pivot on ATLV 4300 litter vacuums. Please follow step-by-step instructions.

## SPECIAL TOOLS / CONSIDERATIONS: NONE

(Estimated time to complete: 1/4 hour)

## PREPARATION:

1. Park the machine on a clean level surface.
2. Turn off machine, remove key, and set parking brake.

**FOR SAFETY: Before leaving or servicing machine, stop on level surface, set parking brake, turn off machine, and remove key.**

## INSTALLATION:

*NOTE: **Do not** discard parts or hardware (nuts, washers, screws, etc...) unless instructed to do so.*

1. Remove the hardware (G) holding the tube (F) to the bent plate (B) attached to the wing bracket plate (E) and disconnect the tube from the bent plate (B). Set the hardware aside. Refer to Fig. 1.

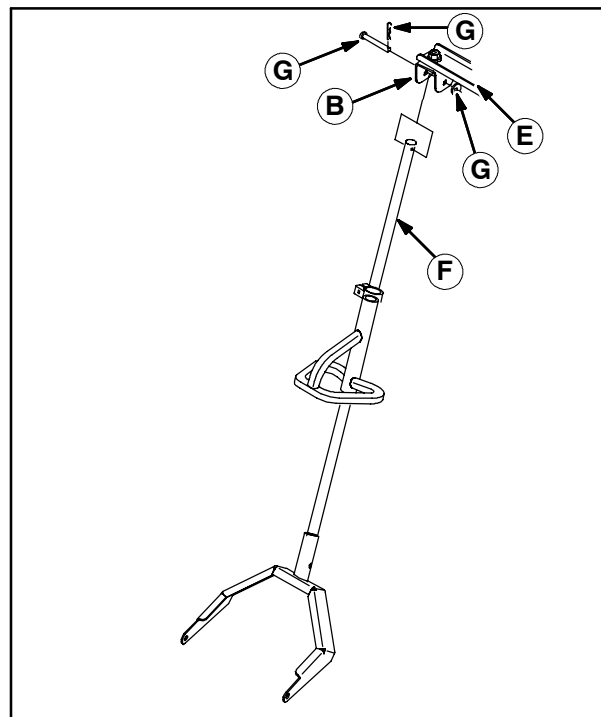


FIG. 1

2. Remove the hex screw (A), bent plate (B), flat washer (C), and hex nut (D) from the wing bracket plate (E). Discard all items removed from the wing bracket plate. Refer to Fig. 2.
3. Use a hex nut (6), two flat washers (2), two flat washers (4), a sleeve (5), and a hex screw (3) to install the new bent plate (1) onto the wing bracket plate (E). Refer to Fig. 2.
4. Use existing hardware (G) to reconnect the tube (F) attached to the hose arm handle to the bent plate (1) attached to the wing bracket plate (E) in the previous step. Refer to Fig. 1.

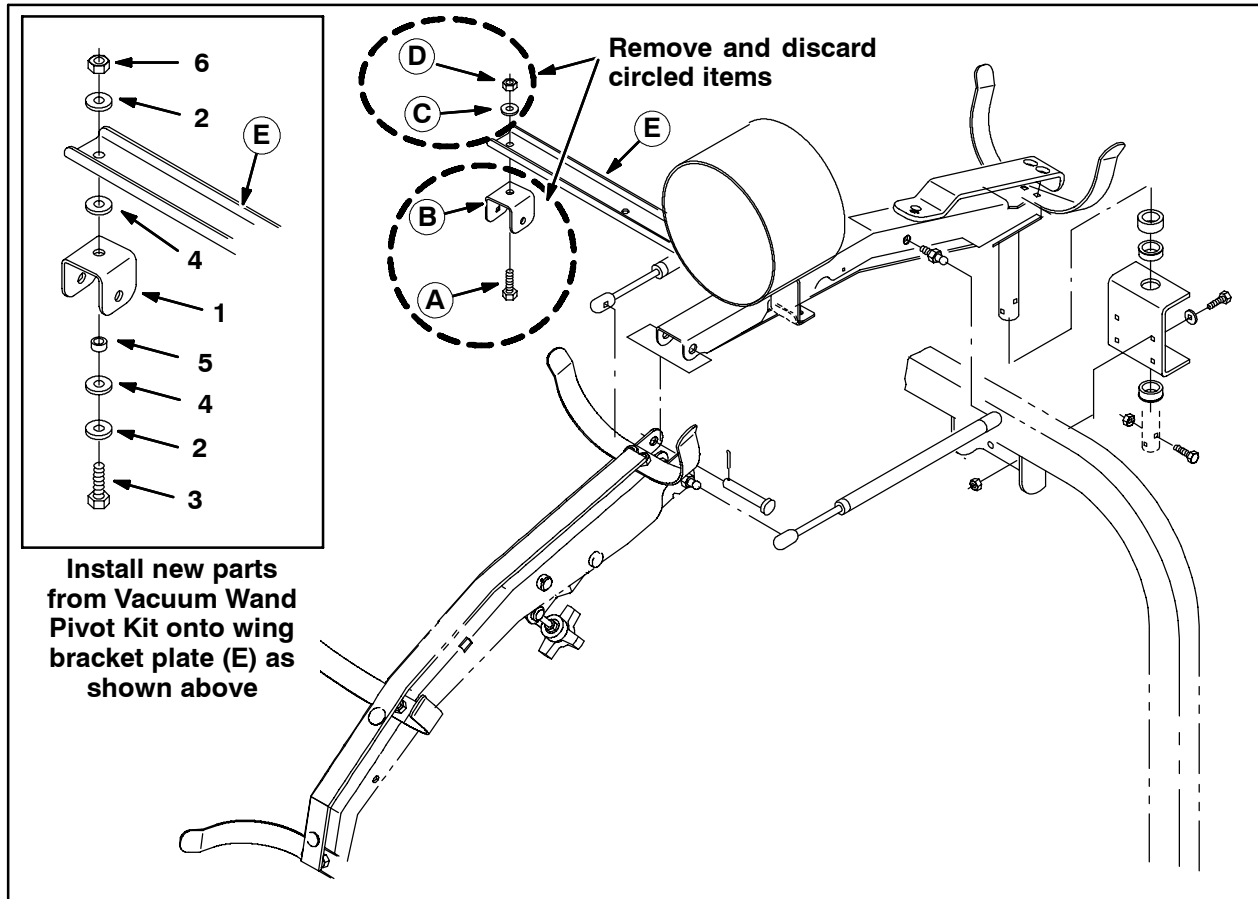


FIG. 2

#### Bill of Materials for Pivot Kit, Vacuum Wand, [ATLV]

Ref.	Tennant Part No.	Description	Qty.
▽	9001168	Pivot Kit, Vacuum Wand, [ATLV]	1
▲	1 367302	Plate, Bent	1
▲	2 01685	Washer, Flat, 0.31 SS	2
▲	3 09010	Screw, Hex, M8 X 1.25 X 25, SS	1
▲	4 89710	Washer, Flat, 0.51B 1.00D .03, Nyl	2
▲	5 360801	Sleeve, .318B .496D .250L SS	1
▲	6 08709	Plate, BentNut, Hex, Lock, M8 X 1.25, NL	1

TENNANT COMPANY  
P. O. Box 1452  
Minneapolis, MN 55440-1452